

# Vehicle interior

- 7-1 Seats and seat anchorages
- 7-3 Head restraints
- 7-5 Seatbelts and seatbelt anchorages
- 7-6 Airbags
- 7-7 Interior impact



## Vehicle interior

## 7-1 Seats and seat anchorages

**IMPORTANT** Any parts that require removal or disassembly in order to carry out the inspection of seat anchorages must be removed. See Vehicle structure – 3-3 Inspection specifications.

A vehicle whose seats or seat anchorages have been damaged beyond the limits specified in Vehicle structure – 3-4 Threshold for requiring repair certification must be certified by a specialist repair certifier before entry certification.

### Summary of legislation

#### Applicable legislation

- Land Transport Rule: Seats and Seat Anchorages 2002

#### Mandatory equipment

- Vehicles must comply with the requirements relating to mandatory equipment set out in the *VIRM: In-service certification*, section 7-1.

#### Compliance with approved standards

- Seats and seat anchorages in the following vehicles must comply with one or more of the approved seat and seat anchorage standards in **Table 7-1-1**:
  - vehicles of class MA, MB, MC and NA manufactured on or after 1 October 2002.

#### Condition, performance and modification

- Seats and seat anchorages must comply with the requirements relating to condition, performance and modification set out in the *VIRM: In-service certification*, section 7-1.

### Reasons for rejection

#### Mandatory equipment

- A vehicle does not comply with a requirement relating to mandatory equipment set out in the *VIRM: In-service certification*, section 7-1.
  - See *Technical bulletin 14* for an explanation of the requirements relating to rotating seats.

#### Compliance with approved standards

- A seat or seat anchorage that is required to comply with an approved seat and seat anchorage standard did not comply, or cannot be demonstrated to have complied, with at least one of the standards listed in **Table 7-1-1** at the time the vehicle was manufactured.

#### Condition, performance and modification

- A seat or seat anchorage does not comply with a requirement relating to condition, performance or modification set out in the *VIRM: In-service certification*, section 7-1.

**Table 7-1-1. Approved seat and seat anchorage standards\***

UN-ECE Regulation no.	EEC/EC Directive	FMVSS	ADR	Japan
17	74/408 81/577 96/37 2005/39	207	3/02	Technical standard for seats and seat anchorages Article 22

\* A seat or seat anchorage that is required to comply with an approved seat and seat anchorage standard must comply with at least one of the standards listed in the table.

**Note 1** Vehicles that comply with approved frontal impact standards are not required to comply with approved seat and seat anchorage standards.



## Summary of legislation

### Applicable legislation

- Land Transport Rule: Head Restraints 2001

### Compliance with approved standards

- Head restraints in the following vehicles must comply with one or more of the approved head restraint standards in **Table 7-3-1**:
  - vehicles of class MA, MB, MC and MD1 manufactured on or after 1 March 1999.

### Condition, performance and modification

- Head restraints must comply with the requirements relating to condition, performance and modification set out in the *VIRM: In-service certification*, section 7-3.

## Reasons for rejection

### Compliance with approved standards

- A head restraint that is required to comply with an approved head restraint standard did not comply, or cannot be demonstrated to have complied, with at least one of the standards listed in **Table 7-3-1** at the time the vehicle was manufactured or the head restraint was fitted.

### Condition, performance and modification

- A head restraint does not comply with a requirement relating to condition, performance or modification set out in the *VIRM: In-service certification*, section 7-3.

**Table 7-3-1. Approved head restraint standards**

UN-ECE Regulation no.	EEC/EC Directive	FMVSS	ADR	Japan
17	78/932	202	22	Technical Standard for Head Restraints Article 22-4
25	74/408			
	81/577			
	96/37			

- \* A head restraint that is required to comply with an approved head restraint standard must comply with at least one of the standards listed in the table.



## Summary of legislation

### Applicable legislation

- Land Transport Rule: Seatbelts and Seatbelt Anchorages 2002
- Land Transport Rule: Vehicle Equipment 2004

### Mandatory and permitted equipment

1. Vehicles must comply with the requirements relating to mandatory and permitted equipment set out in the *VIRM: In-service certification*, section 7-5.

### Compliance with approved standards

2. The following seatbelts must comply with one or more of the standards in **Table 7-5-1**:
  - a) seatbelts required to be fitted in vehicles first registered in New Zealand between 1 January 1991 and 31 March 2002 and first registered outside New Zealand between 1 January 1961 and 31 March 2002
  - b) seatbelts required to be fitted in vehicles first registered in New Zealand from 1 April 2002 that were manufactured between 1 November 1979 and 30 September 2003
  - c) seatbelts required to be fitted in vehicles manufactured from 1 October 2003
  - d) seatbelts fitted in vehicles or seating positions that are not required to be fitted with seatbelts.
3. All seatbelts not listed in (2) above must comply with one or more of the standards in **Table 7-5-2**.
4. The following original equipment seatbelt anchorages (**Note 1**) fitted with seatbelts must comply with one or more of the seatbelt anchorage standards in **Table 7-5-3**:
  - a) seatbelt anchorages in vehicles first registered in New Zealand between 1 January 1991 and 31 March 2002, and first registered outside New Zealand between 1 January 1991 and 31 March 2002
  - b) seatbelt anchorages in vehicles first registered in New Zealand from 1 April 2002 and manufactured between 1 November 1979 and 30 September 2003, and first registered outside New Zealand from 1 January 1991
  - c) seatbelt anchorages in vehicles manufactured from 1 October 2003.
5. Seatbelt anchorages retrofitted (**Note 2**) between 1 January 1991 and 31 March 2002 in the following vehicles must comply with one or more of the requirements in List A of **Table 7-5-5**:
  - vehicles first registered in New Zealand before 1 January 1991 and first registered in any country between 1 November 1979 and 1 January 1991.

## Reasons for rejection

### Mandatory and permitted equipment

1. A vehicle does not comply with a requirement relating to mandatory or permitted equipment set out in the *VIRM: In-service certification*, section 7-5.
  - See *Technical bulletin 14* for an explanation of requirements for rotating seats.
  - For further information on replacement seatbelts, see *Technical bulletin 16*, which outlines requirements for replacement seatbelts, and/or *Technical bulletin 19*, which explains the requirements for an SSBELTSOK exemption.

### Compliance with approved standards

2. A seatbelt did not comply, or cannot be demonstrated to have complied, with at least one of the standards listed in **Table 7-5-1** or, if applicable, **Table 7-5-2** at the time the seatbelt was manufactured.
3. A seatbelt anchorage that is required to comply with an approved seatbelt anchorage standard did not comply, or cannot be demonstrated to have complied, with at least one of the standards listed in **Table 7-5-3** at the time the vehicle was manufactured.
4. A retrofitted seatbelt anchorage that is required to comply with a requirement in List A, B or C of **Table 7-5-5** did not comply, or cannot be demonstrated to have complied, with at least one of the requirements in the applicable list of **Table 7-5-5** at the time the seatbelt anchorage was retrofitted.

### Condition, performance and modification

5. A seatbelt or seatbelt anchorage does not comply with a requirement relating to condition, performance or modification set out in the *VIRM: In-service certification*, section 7-5.
  - *Technical bulletin 15* contains further information for *Toyota Hiace seatbelt requirements*.

## Summary of legislation

6. Seatbelt anchorages retrofitted (**Note 2**) before 1 April 2002 in the following vehicles must comply with one or more of the requirements in List B of **Table 7-5-5**:
  - a) vehicles first registered in New Zealand between 1 January 1991 and 31 March 2002 and first registered outside New Zealand between 1 January 1961 and 31 March 2002
  - b) vehicles first registered in New Zealand from 1 April 2002 and manufactured between 1 November 1979 and 30 September 2003.
7. Seatbelt anchorages retrofitted (**Note 2**) from 1 April 2002 must comply with one or more of the requirements in List C of **Table 7-5-5**.
8. Child restraints permanently fitted to the rear seat of a vehicle must comply with one or more of the requirements in **Table 7-5-4**.

### Condition, performance and modification

9. Seatbelts and seatbelt anchorages must comply with the requirements relating to condition, performance and modification set out in the *VIRM: In-service certification*, section 7-5.

**Note 1** An original equipment seatbelt anchorage is an anchorage that was installed by the vehicle manufacturer at the time the vehicle was manufactured, and was fitted with a seatbelt by the vehicle manufacturer at the time the vehicle was manufactured.

**Note 2** A retrofitted seatbelt anchorage includes a seatbelt anchorage that was installed by the vehicle manufacturer at the time the vehicle was manufactured but that was not fitted with a seatbelt at that time.

**Note 3** When inspecting Nissan Terrano and Mistral model vehicles, corrosion of the rear floorpan assembly may affect seatbelt anchorages. Refer to Technical bulletin 10 for further information.

**Note 4** For class MA vehicles built to FMVSS 209 that are frontal impact compliant, there is no requirement in the standard for original equipment seatbelts or for any genuine replacement seatbelts to be marked. The same also applies to the US equivalent of NA, MB and MC class vehicles built after 1983 to FMVSS 208.

**Note 5** Technical bulletin 17 clarifies seatbelt requirements for class NB and NC vehicles.

**Note 6** Technical bulletin 20 describes the inspection requirements for vehicles with OE-installed rear upper seatbelt anchorages, with retrofitted seatbelts.

**Note 7** When checking the sensitivity of dual-sensitive seatbelts fitted to the rear seating positions, the inspector must check that **both** sensitivities are functioning correctly.

**Note 8** Modification includes re-webbing seatbelts onto the retractor to replace a faded or damaged seatbelt.

**IMPORTANT:** Any parts that require removal or disassembly in order to carry out the inspection of seatbelt anchorages must be removed. See Vehicle structure – 3-3 Inspection specifications.

A vehicle whose structure has been damaged beyond the limits specified in Vehicle structure – 3-4 Threshold for requiring repair certification must be certified by a specialist repair certifier before entry certification.

**Table 7-5-1. Approved seatbelt standards\***

UN-ECE Regulation no.	EEC/EC Directive	FMVSS	ADR	Japan	Others
16	77/541 81/576 82/319 90/628 96/36 2000/3 2005/40	209	4	TS for seatbelt assemblies JIS D4604 Article 22-3	NZS 5401 AS/NZS 2596 SABS 1080

\* Seatbelts must comply with at least one of the standards listed in the table.

**Table 7-5-2. Approved seatbelt standards\***

UN-ECE Regulation no.	EEC/EC Directive	FMVSS	ADR	Japan	Others
16	77/541 81/576 82/319 90/628 96/36 2000/3 2005/40	209	4	TS for seatbelt assemblies JIS D4604 Article 22-3	NZS 1662 NZS 5401 AS/NZS 2596 AS E35.1 AS E35.2 BS AU 160c SABS 1080

\* Seatbelts must comply with at least one of the standards listed in the table.

**Table 7-5-3. Approved OE seatbelt anchorage standards\***

UN-ECE Regulation no.	EEC/EC Directive	FMVSS	ADR	Japan
14	76/115 81/575 82/318 90/629 96/38 2005/41	210	5	TS for seatbelt anchorages Article 22-3

\* A seatbelt anchorage that is required to comply with an approved seatbelt anchorage standard must comply with at least one of the standards listed in the table.

**Table 7-5-4. Approved standards for child restraints**

UN-ECE Regulation no.	FMVSS	British Standard	Japan	Other
44	213 <sup>1</sup>	3254 AU 185 AU 202	TS for child restraints <sup>2</sup> Article 22-5	AS/NZS 1754

<sup>1</sup> Must have been verified for compliance with that standard by an organisation specified by the NZTA in the *New Zealand Gazette*.

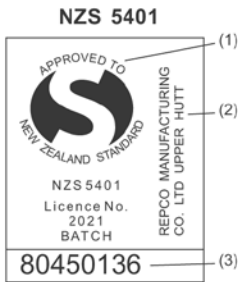
<sup>2</sup> Must be integrated with the rear seat of a motor vehicle.

See overleaf for the standard markings that may assist in determining compliance of seatbelts with approved standards.

Vehicle interior

7-5 Seatbelts and seatbelt anchorages (cont.)

NEW ZEALAND STANDARDS



- (1) standards mark
- (2) manufacturer
- (3) date of manufacture code

NZS 1662

Simon Metal Products



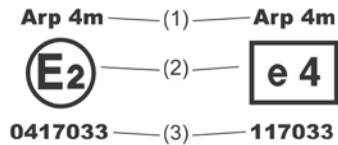
- (1) manufacturer
  - (2) standards mark
- NZS 1662 was withdrawn on 21 May 1976. Seatbelts manufactured after this date are not approved.

NZS 1662

EUROPEAN STANDARDS

Economic Commission for Europe  
ECE 16

European Economic Commission  
(EEC)



Key to symbols

- (1) Type of seatbelt for seating positions.
  - (a) Where 3 point with dual sensitive emergency locking retractors are required, the labelling must display Ar4m may also include letters Z, e & p, must not include letters B, S or s.
  - (b) Where 3 point seatbelts are required, the labelling must display the letter A, may include letters e, r, p, 4, s, must not include letters B or S.
  - (c) Where 2 point lap seatbelts are required, the labelling must display the letter B, may include letters e, r, p, 4, m, s must not include letters A or S.

The main symbols to note are:

- A = 3 point belt
- B = lap belt
- S = special type of belt, e.g., racing harness
- Z = seatbelt forms part of a restraint system
- s = single sensitive

- (2) approving country
- (3) approval number

AUSTRALIAN STANDARDS

AS 2596



Australian Standard  
AS 2596  
Lic.No  
Standards Australia

Current marking



Superseded marking

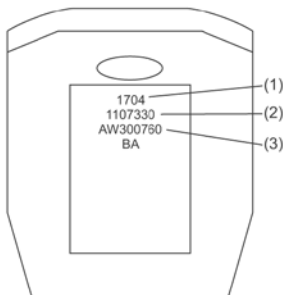
AS E35



AS E35 was withdrawn in October 1991. Seatbelts manufactured after this date are not approved.

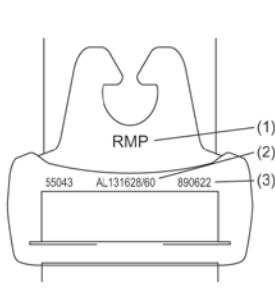
AUSTRALIAN DESIGN RULES

Buckle markings



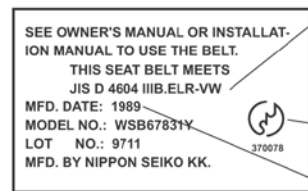
- (1) date of manufacture
- (2) belt part number
- (3) identity code

Belt markings



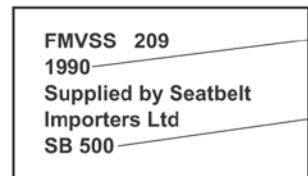
- (1) manufacturer
- (2) belt part number
- (3) date of manufacture

JAPANESE INDUSTRIAL STANDARD JIS D 4604



- Model identification: ELR = emergency locking retractor VW = vehicle and web sensitive
- Japanese Industrial Standards mark (optional)
- Year of manufacture

FEDERAL MOTOR VEHICLE SAFETY STANDARD. FMVSS 209



- Year of manufacture
- Name or trade mark of manufacturer. This is required only if the belt was manufactured outside the USA.

SOUTH AFRICAN STANDARD SABS 1080 1983



Type of belt or required information to be included on the belt label restraint system:

- manufacturer's name, trade mark or mark
  - means of identification for traceability purposes.
- The use of either symbol is optional.

BRITISH STANDARD AU160c



Figure 7-5-1. Approved seatbelt standard markings

## Compliant seatbelts that are not required to have standard markings

- Seatbelts that comply with the Japanese Technical Standard for Seatbelt Assemblies are not required to have standards markings, provided the seatbelts are OE and the vehicle has Japanese type approval.
- Seatbelts in a fully Australian Design Rule (ADR) compliant vehicle are not required to have standards markings.

**Table 7-5-5. List of requirements for retrofitted seatbelt anchorages**

List A	List B	List C
<ul style="list-style-type: none"> <li>• MoT St 31391, except for Appendix YY</li> <li>• LTSA St 120395 (only for seatbelt anchorages for the fitting of seatbelts without retractors<sup>1</sup> retrofitted in vehicles of models that have not been successfully type tested)</li> <li>• <i>Low Volume Vehicle Code</i></li> <li>• HVS certification.</li> </ul>	<ul style="list-style-type: none"> <li>• LTSA St 91290 (only for seatbelt anchorages retrofitted on or after 1 January 1991 and before 31 March 1991 in vehicles first registered in New Zealand in the same period)</li> <li>• MoT St 31391, except for Appendix YY (only for seatbelt anchorages retrofitted in vehicles of models that have been type tested)</li> <li>• Appendix YY of MoT St 31391 (only for seatbelt anchorages retrofitted before 1 January 1997 in privately imported class MA, MB or MC vehicles of models that have not been type tested)</li> <li>• LTSA St 120395 (only for seatbelt anchorages for the fitting of seatbelts without retractors<sup>1</sup> retrofitted in vehicles manufactured before 1 January 1991 of models that have not been successfully type tested)</li> <li>• <i>Low Volume Vehicle Code</i></li> <li>• HVS certification.</li> </ul>	<ul style="list-style-type: none"> <li>• UN-ECE Regulation No. 14 (as determined by a type test carried out by a facility approved by the NZTA)</li> <li>• <i>Low Volume Vehicle Code</i></li> <li>• HVS certification.</li> </ul>

\* A seatbelt anchorage that is required to comply with a requirement in List A, B or C must comply with at least one of the requirements in the applicable list (subject to any specified conditions).

<sup>1</sup> Seatbelts with retractors may be fitted also but only if the LTSA St 120395 anchorages are certified as appropriate for the seatbelts by an approved person or organisation.



## Vehicle interior

## 7-6 Airbags

**IMPORTANT** A vehicle with an airbag in a condition beyond the threshold specified in Vehicle structure – 3-4 Threshold for requiring repair certification must be certified by a specialist repair certifier before entry certification.

Where required, a TSD agent must obtain a declaration from a recognised technician stating that any supplementary restraint system (SRS) is within safe tolerance of the manufacturer's specifications. See Technical bulletin 22 for further information on SRS/ABS declaration requirements.

Vehicles must comply with the requirements relating to mandatory equipment, permitted equipment, condition, performance and modification set out in the *VIRM: In-service certification*, section 7-6.

There are no additional requirements in respect of airbags for the inspection and certification of vehicles for entry into service.



## Vehicle interior 7-7 Interior impact

**IMPORTANT** A vehicle with an airbag in a condition beyond the threshold specified in Vehicle structure - 3-4 Threshold for requiring repair certification must be certified by a specialist repair certifier before entry certification.

### Summary of legislation

#### Applicable legislation

- Land Transport Rule: Interior Impact 2001

#### Compliance with approved standards

See **Note 1** below.

- The interior fittings, controls and surfaces in the passenger compartment of the following vehicles must comply with one or more of the approved interior impact standards in **Table 7-7-1**:
  - vehicles of class MA manufactured on or after 1 January 1992 (**Note 1**)
  - vehicles of class MB and MC manufactured on or after 1 March 1998 (**Note 1**).

#### Condition, performance and modification

- Interior fittings, controls and surfaces must comply with the requirements relating to condition, performance and modification set out in the *VIRM: In-service certification*, section 7-7.

### Reasons for rejection

#### Compliance with approved standards

- A vehicle that is required to comply with approved interior impact standard(s) in respect of its interior fittings, controls and surface did not comply, or cannot be demonstrated to have complied, at the time of manufacture, with:
  - all of the interior impact standard(s) listed in at least one of the five columns in **Table 7-7-1**, or
  - at least one of the frontal impact standard(s) listed in **Table 3-2-1**.

#### Condition, performance and modification

- An interior fitting, control or surface does not comply with a requirement relating to condition, performance or modification set out in the *VIRM: In-service certification*, section 7-7.

**Note 1** Vehicles that comply with approved frontal impact standards are not required to comply with approved interior impact standards.

**Table 7-7-1. Approved interior impact standards\***

UN-ECE Regulation no.	EEC/EC Directive	FMVSS	ADR	Japan
21	74/60 or 78/632 and one of: 71/127 79/795 85/205 86/562 87/354 88/321 00/3	201	11 and 21 and 42 General Safety Requirements (section on external or internal protrusions)	TS for instrument panel impact absorption, and TS for sunvisor impact absorption, and Interpretation of the TS for sunvisor impact absorption, and TS for seatback impact absorption, and TS for impact reduction of inside rear-view mirrors Article 20

\* The interior fittings, controls and surfaces of a vehicle that is required to comply with approved interior impact standard(s) must comply with all the standard(s) listed in at least one of the five columns.

