

Model Bylaw for Speed Limits

The Xxxx District Council Speed Limits Bylaw 2004

1. Introduction

Pursuant to Section 684(1)(13) of the Local Government Act 1974, the Local Government Act 2002 and Land Transport Rule: Setting of Speed Limits 2003 the Xxxx District Council makes this bylaw to set speed limits as specified in the schedules.

2. Title

The title of this bylaw is the Xxxx District Council Speed Limits Bylaw 2004.

3. Date the speed limits come into force

The speed limits described in the schedules come into force on the date specified in the schedules.

4. Interpretation:

Road means the same as in Land Transport Rule: Setting of Speed Limits 2003

Speed limit means the same as in Land Transport Rule: Setting of Speed Limits 2003

Urban traffic area means the same as in Land Transport Rule: Setting of Speed Limits 2003

5. Speed limits

The roads or areas described in the schedules specified in paragraph 6 or as shown on a map referenced in the schedules are declared to have the speed limits specified in the schedules and maps, which are part of this bylaw.

6. Schedules

Schedule 1: Roads that have a speed limit of 20 km/h (Schedule 1 is not used in this bylaw).

Schedule 2: Roads that have a speed limit of 30 km/h.

Schedule 3: Roads that have a speed limit of 40 km/h (Schedule 3 is not used in this bylaw).

Schedule 4: Urban traffic areas - roads that have a speed limit of 50 km/h.

Schedule 5: Roads that have a speed limit of 60 km/h.

Schedule 6: Roads that have a speed limit of 70 km/h.

Schedule 7: Roads that have a speed limit of 80 km/h (Schedule 7 is not used in this bylaw).

Schedule 8: Rural areas - roads that have a speed limit of 100 km/h.

Schedule 9: Roads that have a holiday speed limit.

Schedule 10: Roads that have a variable speed limit.

Schedule 11: Roads that have a minimum speed limit (Schedule 11 is not used in this bylaw).

7. Date bylaw made

This bylaw was made by the Xxxx District Council at a meeting of the Council on 28 July 2004.

The common seal of the Xxxx District Council is attached in the presence of:

_____ Mayor

_____ Chief Executive Officer

Schedule 2 30 km/h

The roads or areas described in this schedule or as shown on a map referenced in this schedule are declared to have a speed limit of 30 km/h.

Reference Number	Speed Limit	Description	Date Speed Limit Comes into Force	Legal Instrument	Previous Legal Instrument
S2/01	30 km/h	At Seaview: All the roads or areas marked on the map entitled "Xxxx District Speed Limits at Seaview", number XDC04002/1 and identified in the legend as having a speed limit of 30 km/h.	16 August 2004	Xxxx District Council Speed Limits Bylaw 2004	Seaview City Council Centre Park Traffic Control Bylaw 1965.

Schedule 4 Urban traffic areas – 50 km/h

The roads or areas described in this schedule or as shown on a map referenced in this schedule are declared to be urban traffic areas that have a speed limit of 50 km/h, except for those roads or areas that are:

- (a) described as having a different speed limit in the appropriate schedule of this bylaw; or
- (b) shown on a map as having a different speed limit, as referenced in the appropriate schedule of this bylaw.

Reference Number	Speed Limit	Description	Date Speed Limit Comes into Force	Legal Instrument	Previous Legal Instrument
S4/01	50 km/h	At Northville: Straight Road: from a point 350 metres measured northerly, generally, along Straight Road from Short Street to the northern abutment of Trickle Stream Bridge. Short Street: from Straight Road to a point 250 metres measured easterly, generally, along Short Street from Straight Road. Swamp Road: from Straight Road to a point 250 metres measured westerly, generally, along Swamp Road from Straight Road.	16 August 2004	Xxxx District Council Speed Limits Bylaw 2004	Notice in the New Zealand Gazette, dd Month year, No. nn, page pppp.
S4/02	50 km/h	At Southtown: All the roads within the area bounded by a line commencing at a point on the eastern side of George Street 50 metres measured northerly, generally, along George Street from Roger Road; thence due east for 500 metres; thence southerly, generally, to the eastern end of Mary Street, thence southerly, generally, across Frank Street at right angles from its northern side to its southern side to a point on the north-eastern bank of Dry Gulch Creek 680 metres measured south-easterly, generally, along the north-eastern bank of Dry Gulch Creek from South Road; thence north-westerly, generally, along the north-eastern bank of Dry Gulch Creek, across South Road at right angles from its south-eastern side to its north-western side to a point on the north-eastern bank of Dry Gulch Creek 930 metres measured north-westerly, generally, along the north-eastern bank of Dry Gulch Creek from South Road; thence northerly, generally, by a right line, across Jane Road at right	16 August 2004	Xxxx District Council Speed Limits Bylaw 2004	Section 52(1) of the Transport Act 1962 and Notice in the New Zealand Gazette, dd Month year, No. nn, page pppp.

Schedule 4 (continued) Urban traffic areas – 50 km/h

Reference Number	Speed Limit	Description	Date Speed Limit Comes into Force	Legal Instrument	Previous Legal Instrument
		angles from its southern side to its northern side to a point 700 metres due west of the starting point; thence due east, across George Street at right angles from its western side to its eastern side to the commencing point, except for the roads within this area that are described as having a different speed limit in the appropriate schedule of this bylaw.			
Alternatively, the 50 km/h speed limits at Southtown could be shown on a map and described as shown in S4/03, (see also S6/02, S8/01 and S8/03).					
S4/03	50 km/h	At Southtown: All the roads within the area marked on the map entitled "Xxxx District Speed Limits at Southtown", number XDC04001/1 and identified in the legend as an urban traffic area having a speed limit of 50 km/h, except for those roads or areas that are marked on the said map and identified in the legend as having a different speed limit, as referenced in the appropriate schedule of this bylaw.	16 August 2004	Xxxx District Council Speed Limits Bylaw 2004	Section 52(1) of the Transport Act 1962 and Notice in the New Zealand Gazette, dd Month year, No. nn, page pppp.
S4/04	50 km/h	At Seaview: All the roads within the area marked on the map entitled "Xxxx District Speed Limits at Seaview", number XDC04002/1 and identified in the legend as an urban traffic area having a speed limit of 50 km/h, except for State Highways and those roads or areas that are marked on the said map and identified in the legend as having a different speed limit, as referenced in the appropriate schedule of this bylaw.	16 August 2004	Xxxx District Council Speed Limits Bylaw 2004	Notice in the New Zealand Gazette, dd Month year, No. nn, page pppp.

Schedule 5 60 km/h

The roads or areas described in this schedule or as shown on a map referenced in this schedule are declared to have a speed limit of 60 km/h.

Reference Number	Speed Limit	Description	Date Speed Limit Comes into Force	Legal Instrument	Previous Legal Instrument
S5/01	60 km/h	At Seaview: All roads marked on the map entitled "Xxxx District Speed Limits at Seaview", number XDC04002/1 and identified in the legend as having a speed limit of 60 km/h.	16 August 2004	Xxxx District Council Speed Limits Bylaw 2004	Xxxx District Council Speed Limits Bylaw 1998.

Schedule 6 70 km/h

The roads or areas described in this schedule or as shown on a map referenced in this schedule are declared to have a speed limit of 70 km/h.

Reference Number	Speed Limit	Description	Date Speed Limit Comes into Force	Legal Instrument	Previous Legal Instrument
S6/01	70 km/h	At Southtown: Frank Street: from a point 200 metres east of George Street to a point 750 metres east of George Street.	16 August 2004	Xxxx District Council Speed Limits Bylaw 2004	Notice in the New Zealand Gazette, dd Month year, No. nn, page pppp.
Alternatively, the 70 km/h speed limit at Southtown could be shown on a map and described as shown in S6/02, (see also S4/03, S8/01 and S8/03).					
S6/02	70 km/h	At Southtown: All roads marked on the map entitled "Xxxx District Speed Limits at Southtown", number XDC04001/1 and identified in the legend as having a speed limit of 70 km/h.	16 August 2004	Xxxx District Council Speed Limits Bylaw 2004	Notice in the New Zealand Gazette, dd Month year, No. nn, page pppp.
S6/03	70 km/h	At Seaview: All roads marked on the map entitled "Xxxx District Speed Limits at Seaview", number XDC04002/1 and identified in the legend as having a speed limit of 70 km/h.	16 August 2004	Xxxx District Council Speed Limits Bylaw 2004	Notice in the New Zealand Gazette, dd Month year, No. nn, page pppp.
S6/04	70 km/h	At Lake Deep Waters: Boat Ramp Alley. Camp Street. Church Street. Hill Road: from Lakeside Road to a point 230 metres measured westerly, generally, along Hill Road from Lakeside Road. Lakeside Road: from a point 200 metres measured northerly, generally, along Lakeside Road from Camp Street to a point 250 metres measured southerly, generally, along Lakeside Road from Boat Ramp Alley. Totara Street. Note: The roads at Lake Deep Waters that are described in Schedule 9, reference number S9/01 have a holiday speed limit of 50 km/h as specified in schedule reference S9/01.	16 August 2004	Xxxx District Council Speed Limits Bylaw 2004	Notice in the New Zealand Gazette, dd Month year, No. nn, page pppp.

Schedule 8 Rural areas – 100 km/h

The roads or areas described in this schedule or as shown on a map referenced in this schedule are declared to be rural areas that have a speed limit of 100 km/h.

Reference Number	Speed Limit	Description	Date Speed Limit Comes into Force	Legal Instrument	Previous Legal Instrument
S8/01	100 km/h	All Xxx District Council roads outside an urban traffic area listed in Schedule 4 have a speed limit of 100 km/h, except for roads or areas that are: (a) described as having a different speed limit in the appropriate schedule of this bylaw; or (b) shown on a map as having a different speed limit, as referenced in the appropriate schedule of this bylaw.	16 August 2004	Clause 2.3 Land Transport Rule: Setting of Speed Limits 2003	Regulation 21(1) Traffic Regulations 1976.
S8/02	100 km/h	At Southtown: South Road: from a point 50 metres measured south-westerly, generally, along South Road from Frank Street to the north-eastern bank of Dry Gulch Creek.	16 August 2004	Xxxx District Council Speed Limits Bylaw 2004	Notice in the New Zealand Gazette, dd Month year, No. nn, page pppp.
Alternatively, the 100 km/h speed limit at Southtown could be shown on a map and described as shown in S8/03, (see also S4/03, S6/02 and S8/01).					
S8/03	100 km/h	At Southtown: All Xxx District Council roads marked on the map entitled "Xxxx District Speed Limits at Southtown", number XDC04001/1 and identified in the legend as having a speed limit of 100 km/h.	16 August 2004	Xxxx District Council Speed Limits Bylaw 2004	Notice in the New Zealand Gazette, dd Month year, No. nn, page pppp.

Schedule 9 Holiday speed limits

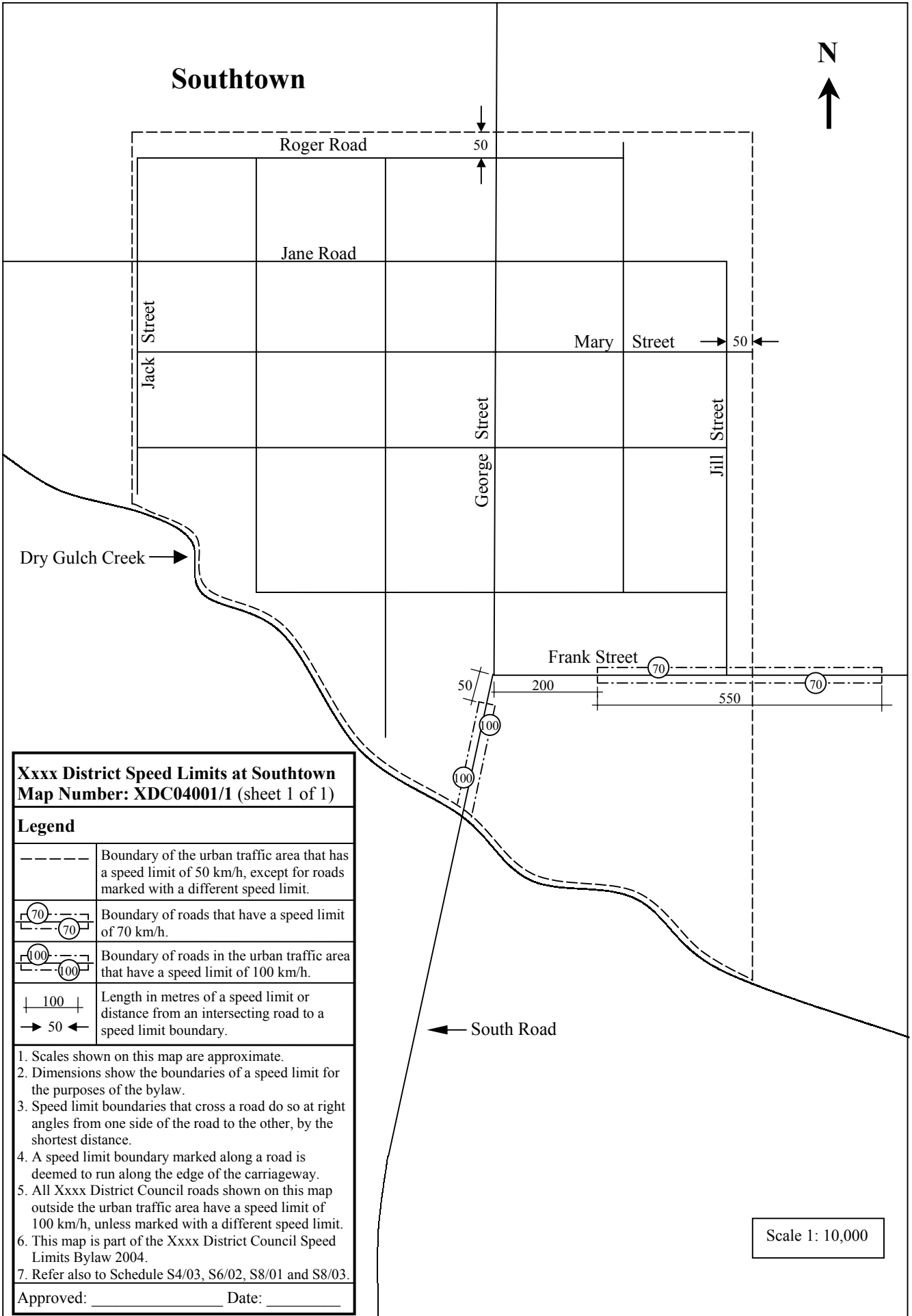
The roads or areas described in this schedule or as shown on a map referenced in this schedule are declared to have a holiday speed limit as specified in this schedule.

Reference Number	Speed Limit	Description	Date Speed Limit Comes into Force	Legal Instrument	Previous Legal Instrument
S9/01	50 km/h holiday speed limit	<p>At Lake Deep Waters: The roads described in this entry of this schedule have a holiday speed limit of 50 km/h during the following periods:</p> <ol style="list-style-type: none"> 1. Beginning on 20 December each year and ending on 31 January the following year (both dates included); and 2. Beginning on the Thursday before Easter and ending on the Tuesday after Easter each year (both days included). <p>At all other times the roads described in this entry of this schedule have a speed limit of 70 km/h, as described in Schedule 6, reference number S6/04.</p> <p>Roads at Lake Deep Waters that have a holiday speed limit of 50 km/h: Boat Ramp Alley. Camp Street. Lakeside Road: from a point 200 metres measured northerly, generally, along Lakeside Road from Camp Street to a point 250 metres measured southerly, generally, along Lakeside Road from Boat Ramp Alley.</p>	As specified in the description in this entry of this schedule.	Xxxx District Council Speed Limits Bylaw 2004	Xxxx District Council Seasonal Speed Limits Bylaw 1993.

Schedule 10 Variable speed limits

The roads or areas described in this schedule or as shown on a map referenced in this schedule are declared to have a variable speed limit as specified in this schedule.

Reference Number	Speed Limit	Description	Date Speed Limit Comes into Force	Legal Instrument	Previous Legal Instrument
S10/01	40 or 50 km/h variable speed limit	<p>At Seaview: School Road: as marked on the map entitled "Xxxx District Speed Limits at Seaview", number XDC04002/1 and identified in the legend as having a variable speed limit of 40 or 50 km/h, subject to the following conditions:</p> <ol style="list-style-type: none"> 1. The speed limit is 40 km/h when the variable speed limit signs are operating and the numerals "40" are displayed. 2. The times during which the variable speed limit signs are permitted to operate are limited to: <ol style="list-style-type: none"> (a) 35 minutes before the start of school until the start of school; (b) 20 minutes at the end of school, commencing no earlier than 5 minutes before the end of school; (c) 10 minutes at any other time during a school day when at least 50 children cross the road or enter or leave a vehicle at the roadside. 3. The speed limit is 50 km/h at all times when the variable speed limit signs are not operating. 	16 August 2004	<p>Notice in the New Zealand Gazette, dd June 2004, No. nn, page pppp, pursuant to clause 6.1(1) of Land Transport Rule: Setting of Speed Limits 2003, and Xxxx District Council Speed Limits Bylaw 2004</p>	Xxxx District Council Part-time Speed Limits at Schools Bylaw 2002.



Southtown



**Xxxx District Speed Limits at Southtown
Map Number: XDC04001/1 (sheet 1 of 1)**

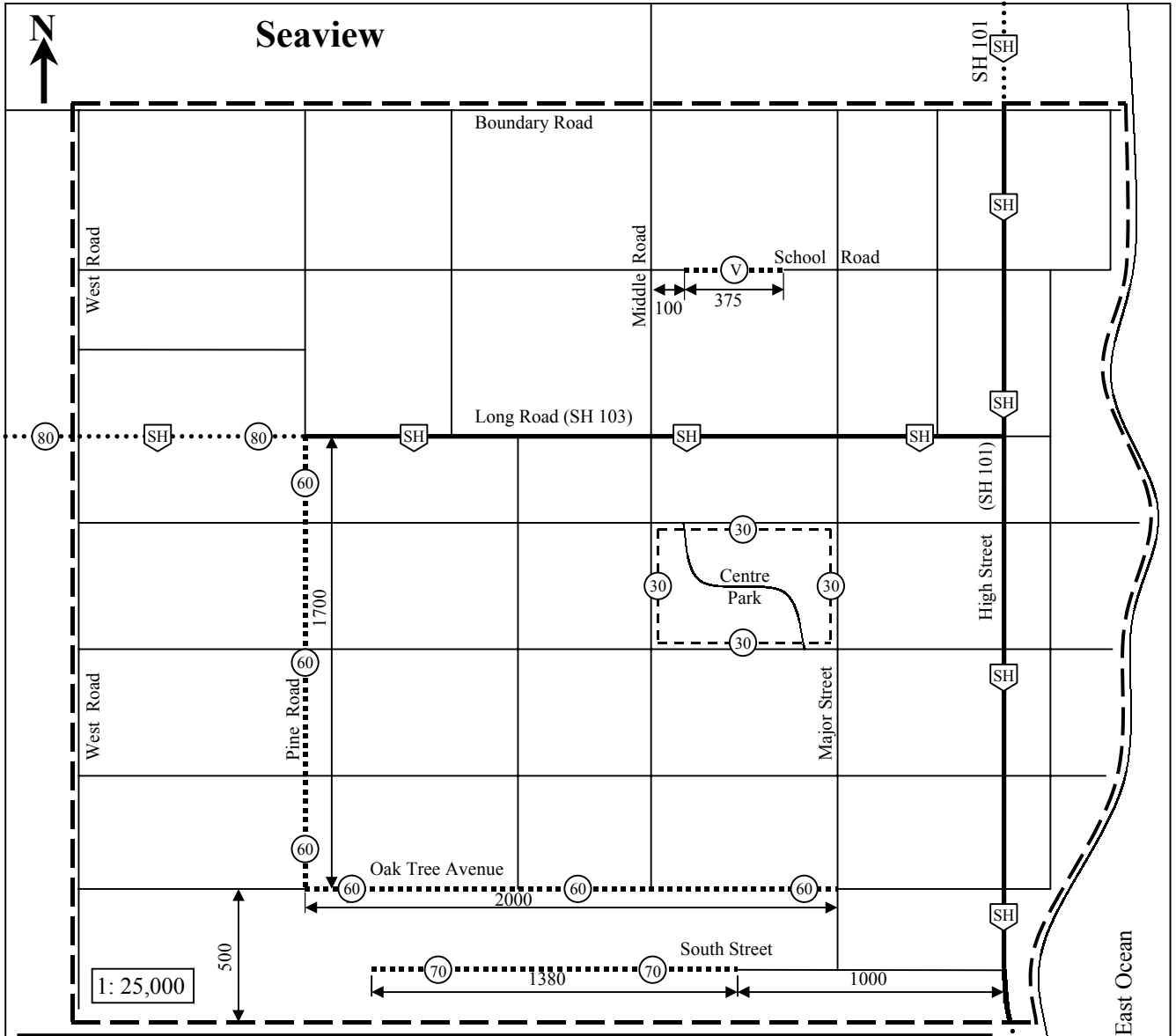
Legend

	Boundary of the urban traffic area that has a speed limit of 50 km/h, except for roads marked with a different speed limit.
	Boundary of roads that have a speed limit of 70 km/h.
	Boundary of roads in the urban traffic area that have a speed limit of 100 km/h.
	Length in metres of a speed limit or distance from an intersecting road to a speed limit boundary.

1. Scales shown on this map are approximate.
2. Dimensions show the boundaries of a speed limit for the purposes of the bylaw.
3. Speed limit boundaries that cross a road do so at right angles from one side of the road to the other, by the shortest distance.
4. A speed limit boundary marked along a road is deemed to run along the edge of the carriageway.
5. All XXXX District Council roads shown on this map outside the urban traffic area have a speed limit of 100 km/h, unless marked with a different speed limit.
6. This map is part of the XXXX District Council Speed Limits Bylaw 2004.
7. Refer also to Schedule S4/03, S6/02, S8/01 and S8/03.

Approved: _____ Date: _____

Scale 1: 10,000



Xxxx District Speed Limits at Seaview		Map Number: XDC04002/1 (sheet 1 of 1)	
Legend			
	Boundary of the urban traffic area that has a speed limit of 50 km/h, except for roads or areas marked with a different speed limit.		
	Boundary of an area that has a speed limit of 30 km/h.		
	Roads that have a speed limit of 60 km/h.		
	Roads that have a speed limit of 70 km/h.		
	Roads that have a variable speed limit of 40 or 50 km/h at schools as specified in Schedule 10.		
	Length in metres of a speed limit, or distance from an intersecting road or feature shown on the map to a speed limit boundary.		
	State Highways in the urban traffic area that have a speed limit of 50 km/h.	Refer to the Transit New Zealand speed limits bylaw for speed limits on State Highways.	
	State Highways that have a speed limit of 80 km/h.		
	State Highways in the rural area that have a speed limit of 100 km/h.		
<ol style="list-style-type: none"> Scales shown on this map are approximate. Dimensions show the boundaries of a speed limit for the purposes of the bylaw. Speed limit boundaries that cross a road do so at right angles from one side of the road to the other, by the shortest distance. A speed limit boundary marked along a road is deemed to run along the edge of the carriageway. The speed limit boundaries on roads that have a 60 or 70 km/h speed limit or a variable speed limit, are deemed to run along the edges of the carriageway. All XXXX District Council roads shown on this map outside the urban traffic area have a speed limit of 100 km/h. Speed limits on State Highways are not part of the XXXX District Council Speed Limit Bylaw 2004. They are shown on this map for information only. Refer to the Transit New Zealand speed limits bylaw for speed limits on State Highways. This map is part of the XXXX District Council Speed Limits Bylaw 2004. Refer also to Schedule S2/01, S4/04, S5/01, S6/03, S8/01 and S10/01. 			
Approved: _____		Date: _____	