

# Crash Test Results

## New Car Safety

### AUDI Q5 (RHD)

2009 on

Front+side+head airbags



Offset crash test at 64km/h



**ANCAP**  
Rated ★★★★★

**Occupant Protection**

**Occupant Protection Score 35.21 out of 37**

Variant: Steppe

Eng: 2 litre diesel

Kerb weight: 1660 kg

Category: 4WD - MEDIUM

Vehicles built: 2009

Tested by Euro NCAP

**Important note:** The diesel right-hand-drive European model was tested by Euro NCAP. Australasian specifications may vary and therefore models sold in Australasia might provide different levels of protection to those described on this page.

#### Model History and Safety Features

The tested model of Q5 was introduced in Australia and New Zealand during 2009.

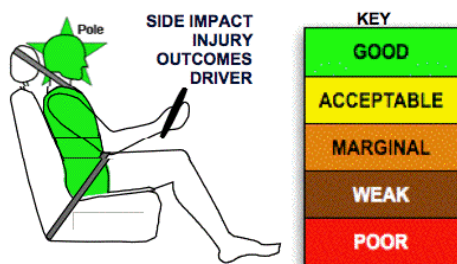
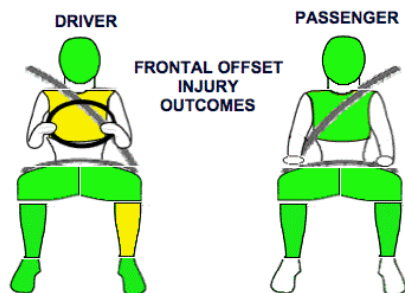
Dual front airbags, side airbags and head-protecting side curtains are standard equipment. Antilock brakes (ABS), electronic brakeforce distribution (EBD), emergency brake assist, electronic stability control (ESC) and daytime running lights are also standard. Intelligent seat belt reminders are fitted to both front seats. Several other advanced safety features are available.

The front seat belt buckles are mounted on the seats and the upper anchorages are adjustable. These features improve the fit of the seat belt. Pretensioners are fitted to the front seat belts to reduce slack in the event of a crash. A three point seat belt is fitted to the centre rear seat. This provides better protection than a two point (lap) seat belt.

#### OCCUPANT PROTECTION: 5 Stars

The Q5 scored 15.21 out of 16 in the offset crash test. The passenger compartment held its shape extremely well. There was a slight risk of serious chest and leg injury for the driver.

The vehicle scored 16 out of 16 in the side impact crash test and a further two points in the optional pole test.



#### FRONTAL OFFSET CRASH TEST (v4.2)

Body region scores out of 4 points each: Head/neck 4 pts, chest 3.56 pts, upper legs 4 pts, lower legs 3.65 pts.

The passenger compartment held its shape well in the offset crash test. The clutch pedal moved rearwards by 8 mm. The throttle pedal moved upwards 12 mm. The steering wheel hub moved 52mm forward, 17mm downward and 1 mm sideways. The front ("A") pillar did not move relative to the rear of the vehicle. All doors remained closed during the crash. After the crash all doors could be opened with normal effort.

The airbag cushioned the head of the driver and contact was stable. There were no knee hazards. The passenger's head was cushioned by the airbag.


#### SIDE IMPACT CRASH TEST (v4.2)

Body region scores out of 4 points each: Head 4 pts, chest 4 pts, abdomen 4 pts, pelvis 4 pts.

The vehicle was eligible for an optional pole impact test, since it had head-protecting side airbags. The manufacturer decided to go ahead with the pole test and the vehicle earned a further two points.

#### PEDESTRIAN PROTECTION: 2 Stars

The bonnet offered poor protection in most areas likely to be struck by a pedestrian's head. Similarly, protection offered by the front edge of the bonnet to pedestrian's legs was poor. Only the bumper scored maximum points, offering good protection.

PEDESTRIAN PROTECTION			
 <b>ANCAP</b> Rated ★★☆☆☆ Tested by Euro NCAP v4.2	Child head impacts	3.54	
	Adult head impacts	1.98	
	Upper leg impacts	Zero	
	Lower leg impacts	6	
	Total (out of 36)	11.51	



■ GOOD  
■ ADEQUATE  
■ MARGINAL

June 2009

PO Box 4041

Manuka ACT 2603

q5\_09.doc

Issued 3/6/2009



**ANCAP**

Crash testing for safety

AUSTRALASIAN  
NEW CAR ASSESSMENT  
PROGRAM

# TECHNICAL DATA - AUDI Q5 - 2009 ON

## INJURY MEASUREMENTS

Body region	Offset Crash Test at 64km/h (v4.2)		Side Impact Crash Test at 50km/h (v4.2)
	Driver	Passenger	Driver
<b>Head HIC</b>	229	223	22
Acceleration (g for 3ms)	37.2	38.6	14.9
<b>Neck - Shear (kN)</b>	0.28	0.32	-
Tension (kN)	0.94	0.81	-
Extension (Nm)	7.5	23.3	-
<b>Chest Accln (g for 3ms)</b>	-	-	-
Compression (mm)	25.09	17.68	8.65
Viscous criterion (m/s)	0.12	0.07	0.02
<b>Abdomen - Force (kN)</b>	-	-	0.230
<b>Pelvis - Force (kN)</b>	-	-	0.480
<b>Upper legs Force (kN)</b>			
Left	0.64	0.20	
Right	0.13	0.10	
Knee displ (mm)			
Left	0.20	0.10	
Right	0.00	0.20	
<b>Lower legs Force (kN)</b>			
Left	2.52	1.19	
Right	1.60	1.71	
Index (Upper/Low)			
Left	0.39 /0.16	0.25 /0.11	
Right	0.28 /0.13	0.35/0.16	

### Bonus points (maximum 5)

Pole Test: 2 pts

Seat belt reminders: 2 (see table below for details)

### Modifiers - deductions from offset test scores

Head	No deduction
Chest	No deduction
Upper leg	No deduction
Lower leg	No deduction
Foot score	Score 4 points

### Modifiers - deductions from side impact test scores

Chest	No deduction
-------	--------------

### Safety features

These specifications are subject to change. Please check with manufacturer for the latest specifications.

Driver airbag	S	Antilock (ABS) brakes / Electronic brake distribution / Brake Assist	S/S/S
Passenger front airbag	S	Electronic stability control (ESC, VSC, DSC, ESP, VSA)	S#
Side airbags, front seats - chest protection	S	3 point centre rear seat belt	S
Side airbags, front seats - head protection	S	Active head restraints - front seats	S
Side airbags, rear seats - head protection		Intelligent seat belt reminder - driver	S
Driver knee airbag	X	Intelligent seat belt reminder - front passenger	S
Seat belt pretensioners (Front/Rear outboard)	S/X	Rear seat belt status indicator	X

Key:

S = standard on all variants

O = optional on base variant. May be standard on higher variants

V= not available on base variant but standard or optional on higher variants

X = not available on any variant

# ESC required by ANCAP for 5 star rating from 2008

