

Crash Test Results

New Car Safety

FORD FALCON FG UTE

July 2008 on

Dual front airbags



Offset crash test at 64km/h

FRONTAL OFFSET CRASH TEST (v4.1)

Body region scores out of 4 points each: Head/neck 4 pts, chest 2.75 pts, upper legs 4 pts, lower legs 3.87 pts.

The passenger compartment held its shape extremely well in the offset crash test. The accelerator pedal moved rearwards by 60 mm. The brake pedal moved downwards 2mm. The steering wheel hub moved 30mm forward, 15 mm upward and 5 mm sideways. There was no rearwards movement of the front ("A") pillar. All doors remained closed during the crash. After the crash both doors could be opened with normal effort.

The airbag cushioned the head of the driver and contact was stable. There were no knee hazards with the tunnel-mounted transmission control. A 2 point deduction applies where the transmission control is mounted on the steering column, due to knee hazards, but this model retains a 4 star rating.

SIDE IMPACT CRASH TEST (v4.1)

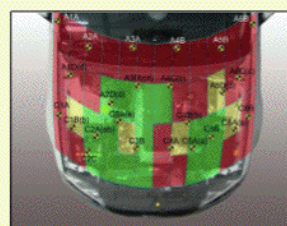
Body region scores out of 4 points each: Head 4 pts, chest 2.32 pts, abdomen 3.57 pts, pelvis 4 pts.

The chest score was reduced due to unrealistic loading of the dummy's pelvis..

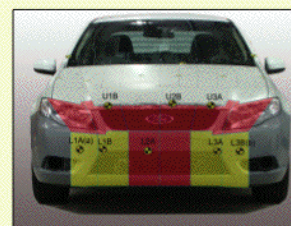
PEDESTRIAN PROTECTION: 2 Stars

The following are based on ANCAP's tests of the Falcon sedan.

PEDESTRIAN PROTECTION		
 Version 4.1	Child head impacts	7.25
	Adult head impacts	2.10
	Upper leg impacts	Zero
	Lower leg impacts	1.60
	Total (out of 36)	10.95



Child and adult head impact



Adult leg impact (upper and full legforms)

pass marginal fail

Occupant Protection
Rated ★ ★ ★ ★

Occupant Protection Score 29.51 out of 37

Variant: STYLESIDE BOX

Eng: 4 litre

Kerb weight: 1730 kg

Category: UTILITY

Vehicles built: August 2008

Model History and Safety Features

The tested model of Ford Falcon FG Ute was introduced in Australia during 2008. This rating applies to models fitted with the tunnel-mounted transmission control/gear shift.

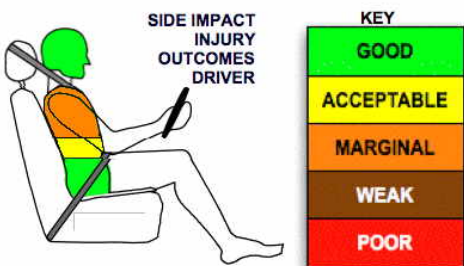
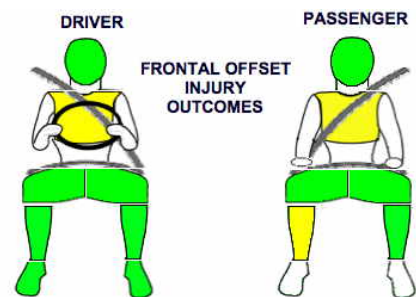
Dual front airbags are standard equipment. Antilock brakes (ABS) with electronic brakeforce distribution (EBD) are also standard. Head-protecting side airbags are optional. Electronic stability control (ESC) will be available from December 2008. An advanced seat belt reminder is fitted to the driver seat. Several other safety features are incorporated in the Intelligent Safety System.

The front seat belt buckles are mounted on the seats and the upper anchorages are adjustable. These features improve the fit of the seat belt. Pretensioners are fitted to the front seat belts to reduce slack in the event of a crash.

OCCUPANT PROTECTION: 4 Stars

The Falcon Ute scored 14.62 out of 16 in the offset crash test. The passenger compartment was in excellent shape after the test. There was a slight risk of serious chest injury for the driver and passenger and a slight risk of serious lower leg injury for the passenger.

The vehicle scored 13.89 out of 16 in the side impact crash test. There was a moderate risk of serious chest injury for the driver.



November 2008

PO Box 4041

Manuka ACT 2603

falcon08ute.doc

Issued 26/11/08

ANCAP
Crash testing for safety

AUSTRALASIAN
NEW CAR ASSESSMENT
PROGRAM

TECHNICAL DATA - FORD FALCON UTE (FG) - 2008 on

INJURY MEASUREMENTS

Body region	Offset Crash Test at 64km/h (v4.1)		Side Impact Crash Test at 50km/h (v4.1)
	Driver	Passenger	Driver
Head HIC	219	292	175
Acceleration (g for 3ms)	37.8	45.7	61.2
Neck - Shear (kN)	0.39	0.35	-
Tension (kN)	1.55	1.11	-
Extension (Nm)	22.4	14.8	-
Chest Accln (g for 3ms)	34.300	38.300	-
Compression (mm)	30.72	22.80	21.70
Viscous criterion (m/s)	0.16	0.10	0.24
Abdomen - Force (kN)	-	-	1.160
Pelvis - Force (kN)	-	-	1.650
Upper legs Force (kN)			
Left	0.97	0.28	
Right	0.17	1.83	
Knee displ (mm)			
Left	0.47	0.22	
Right	0.04	1.87	
Lower legs Force (kN)			
Left	1.92	1.45	
Right	1.64	1.42	
Index (Upper/Low)			
Left	0.39 /0.32	0.34 /0.16	
Right	0.31 /0.37	0.3/0.43	

Bonus points (maximum 5)

Pole Test: Not eligible due to a lack of head-protecting side airbags

Seat belt reminders: 1 (see table below for details)

Modifiers - deductions from offset test scores

Head	No deduction
Chest	No deduction
Upper leg Variable & conc. loading	No deduction@
Lower leg	No deduction
Foot score	Score 4 points

Notes: Steering column and pedal movements are measured relative to the driver's seat.

@ 2 point deduction for left leg where the transmission control is on the steering column.

Modifiers - deductions from side impact test scores

Chest T12 spine load	1.68 pt deduction
----------------------	-------------------

Safety features

These specifications are subject to change. Please check with manufacturer for the latest specifications.

Driver airbag	S	Antilock (ABS) brakes / Electronic brakeforce distribution / Brake Assist	S/S/O*
Passenger front airbag	S	Electronic stability control (ESC, VSC, DSC, ESP, VSA)	O*#
Side airbags, front seats - chest protection	O	3 point centre rear seat belt	-
Side airbags, front seats - head protection	O	Active head restraints - front seats	X
Side airbags, rear seats - head protection	-	Intelligent seat belt reminder - driver	S
Driver knee airbag	X	Intelligent seat belt reminder - front passenger	X
Seat belt pretensioners (Front/rear outboard)	S/-	Rear seat belt status indicator	-

* ESC and Emergency Brake Assist Available from December 2008. ESC not available for E-Gas engine.

Key:

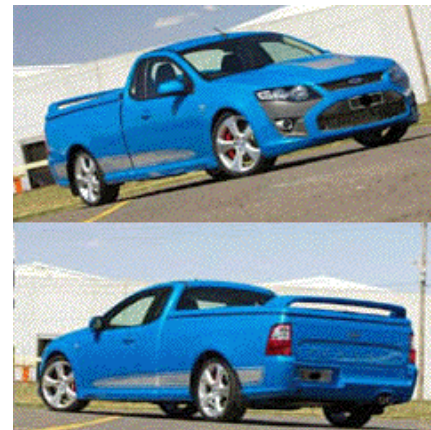
S = standard on all variants

O = optional on base variant. May be standard on higher variants

V= not available on base variant but standard or optional on higher variants

X = not available on any variant

ESC required by ANCAP for 5 star rating from 2008



ANCAP

Crash testing for safety

AUSTRALASIAN
NEW CAR ASSESSMENT
PROGRAM