

Crash Test Results

New Car Safety

FORD FIESTA (LHD) with ESC
2009 on Front+side & head+knee airbags*



Offset crash test at 64km/h

FRONTAL OFFSET CRASH TEST (v4.2)

Body region scores out of 4 points each: Head/neck 4 pts, chest 3.51 pts, upper legs 4 pts, lower legs 3.39 pts.

The passenger compartment held its shape well in the offset crash test. The accelerator pedal moved forwards by 3mm. The clutch pedal moved downwards 41mm. The steering wheel hub moved 65mm forward and 29mm downward. The front ("A") pillar moved 4 mm rearwards. All doors remained closed during the crash. After the crash all doors could be opened with normal effort.

The airbag cushioned the head of the driver and contact was stable. The knee airbag protected the driver's knees and legs. The passenger's head was cushioned by the airbag.


SIDE IMPACT CRASH TEST (v4.2)

Body region scores out of 4 points each: Head 4 pts, chest 4 pts, abdomen 3.55 pts, pelvis 4 pts.

The vehicle was eligible for an optional pole impact test, since it had head-protecting side airbags. The manufacturer decided to go ahead with the pole test and the vehicle earned a further two points.

PEDESTRIAN PROTECTION: 3 Stars

The bumper scored maximum points for its protection of pedestrians' legs. In most areas where a child's head might strike, the bonnet was rated as fair. However, protection was predominantly poor in those areas around the base of the windscreen likely to be struck by an adult's head.

PEDESTRIAN PROTECTION		
 ANCAP Rated ★ ★ ★ ★ Tested by Euro NCAP v4.2	Child head impacts	8.37
	Adult head impacts	4
	Upper leg impacts	2.02
	Lower leg impacts	6
	Total (out of 36)	20.39



GOOD
 ADEQUATE
 MARGINAL

Pedestrian protection


ANCAP Occupant Protection
 Rated ★ ★ ★ ★ ★

Occupant Protection Score 34.45 out of 37

* Safety equipment, as tested, not standard on all variants

Variant: 5 Door hatch Eng: 1.25 litres
 Kerb weight: 1063 kg Category: SMALL CAR
 Vehicles built: 2008 Tested by Euro NCAP

Important note: The 1.25 litre left-hand-drive European model was tested by Euro NCAP. Australasian specifications may vary and therefore models sold in Australasia might provide different levels of protection to those described on this page.

Model History and Safety Features

The tested model of Ford Fiesta was introduced in Australia during 2009. This 5 star rating only applies to the Fiesta 5 door hatch when fitted with head-protecting side airbags, a driver knee airbag and electronic stability control (ESC).

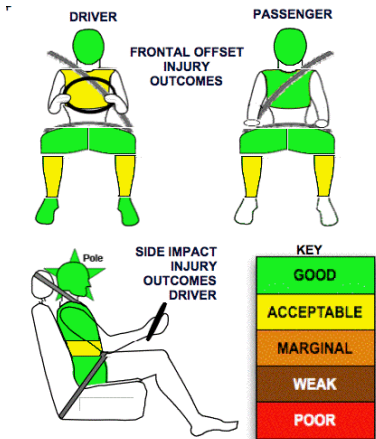
Dual front airbags and antilock brakes (ABS) with electronic brake distribution (EBD) are standard. Side airbags (with chest and head protection), a driver knee airbag and ESC are standard on the Zetec and optional on the other variants. Intelligent seat belt reminders are fitted to both front seats.

The front seat belt buckles are mounted on the seats and the upper anchorages are adjustable. These features improve the fit of the seat belt. Pretensioners are fitted to the front seat belts to reduce slack in the event of a crash. A three point seat belt is fitted to the centre rear seat. This provides better protection than a two point (lap) seat belt.

OCCUPANT PROTECTION: 5 Stars

The Fiesta scored 14.90 out of 16 in the offset crash test. The passenger compartment held its shape well. There was a slight risk of serious chest and leg injury for the driver.

The vehicle scored 15.55 out of 16 in the side impact crash test. There was a slight risk of serious abdomen injury for the driver. A further two points were scored in the optional pole test.



January 2009

PO Box 4041
 Manuka ACT 2603
 fiesta09.doc
 Issued 19/12/2008



ANCAP

Crash testing for safety
 AUSTRALASIAN
 NEW CAR ASSESSMENT
 PROGRAM

www.ancap.com.au

TECHNICAL DATA - FORD FIESTA WITH SIDE & KNEE AIRBAGS - 2009 on

INJURY MEASUREMENTS

Body region	Offset Crash Test at 64km/h (v4.2)		Side Impact Crash Test at 50km/h (v4.2)
	Driver	Passenger	Driver
Head HIC	304	399	21
Acceleration (g for 3ms)	43.4	49.4	14.6
Neck - Shear (kN)	0.54	0.34	-
Tension (kN)	1.52	0.98	-
Extension (Nm)	19.5	13.5	-
Chest Accln (g for 3ms)	-	-	-
Compression (mm)	25.44	19.25	21.80
Viscous criterion (m/s)	0.08	0.06	0.11
Abdomen - Force (kN)	-	-	1.170
Pelvis - Force (kN)	-	-	2.400
Upper legs Force (kN)			
Left	0.83	0.45	
Right	0.78	0.42	
Knee displ (mm)			
Left	0.00	0.00	
Right	0.00	0.00	
Lower legs Force (kN)			
Left	2.57	2.92	
Right	2.30	2.40	
Index (Upper/Low)			
Left	0.32 /0.26	0.33 /0.37	
Right	0.31 /0.34	0.37/0.44	

Bonus points (maximum 5)

Pole Test: 2 pts

Seat belt reminders: 2 (see table below for details)

Modifiers - deductions from offset test scores

Head	No deduction
Chest	No deduction
Upper leg	No deduction
Lower leg	No deduction
Foot score	Score 4 points

Modifiers - deductions from side impact test scores

Chest	No deduction
-------	--------------

Safety features

These specifications are subject to change. Please check with manufacturer for the latest specifications.



Driver airbag	S	Antilock (ABS) brakes / Electronic brake distribution / Brake Assist	S/S/O
Passenger front airbag	S	Electronic stability control (ESC, VSC, DSC, ESP, VSA)	O# (S NZ)
Side airbags, front seats - chest protection	O √ (S NZ)	3 point centre rear seat belt	S
Side airbags, front seats - head protection	O √ (S NZ)	Active head restraints - front seats	X
Side airbags, rear seats - head protection	X	Intelligent seat belt reminder - driver	S
Driver knee airbag	O √ (S NZ)	Intelligent seat belt reminder - front passenger	S
Seat belt pretensioners (Front/Rear outboard)	S/X	Rear seat belt status indicator	X

Key: √ = Fitted to vehicle that was crash tested (where not standard)

S = standard on all variants

O = optional on base variant. May be standard on higher variants

V = not available on base variant but standard or optional on higher variants

X = not available on any variant

ESC required by ANCAP for 5 star rating from 2008